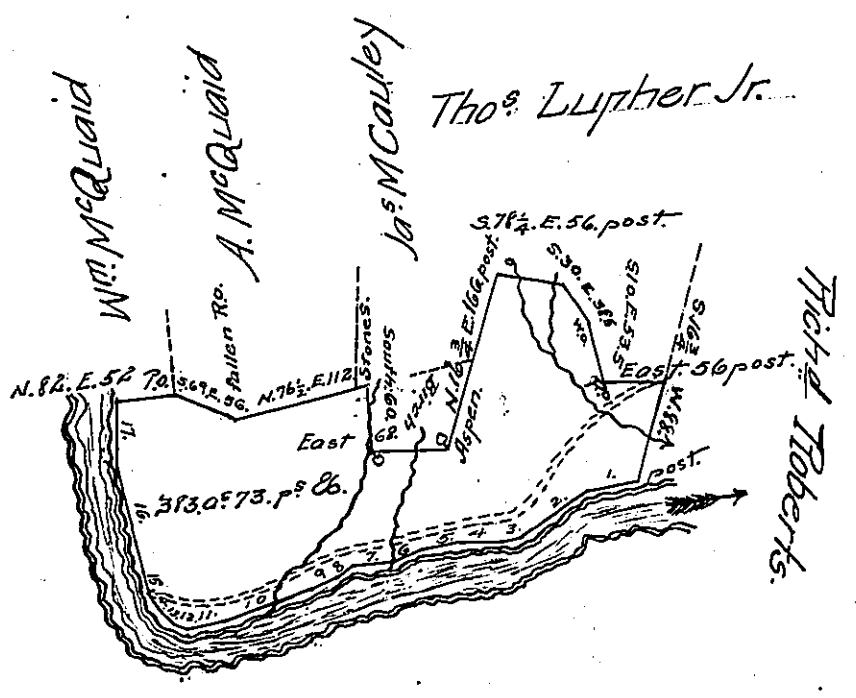


Courses and distances up Frenchcreek from pt

- N^o 1. S. 83 1/2. W. 45. post.
- 2. S. 56. W. 70. -
- 3. S. 82. W. 18.5. -
- 4. S. 88 1/2. W. 33. -
- 5. S. 78 3/4. W. 32. -
- 6. S. 67 1/2. W. 30. -
- 7. S. 84. W. 29. -
- 8. S. 62. W. 16.5. -
- 9. S. 68 1/2. W. 25. -
- 10. S. 71. W. 77. -
- 11. S. 82. W. 31. -
- 12. S. 74 1/2. W. 11.9. -
- 13. N. 44. W. 17.5. -
- 14. N. 25. W. 15. -
- 15. N. 17. W. 18.4. -
- 16. N. 13 1/2. W. 90. -
- 17. N. 4. W. 50. post.



Draft of a tract of land situate Swarcreek township Venango County West of the Allegheny river, and North of and adjoining Frenchcreek, being parts of two larger tracts settled by Jacob Rice and W^m. Hays dec^d respectively. Surveyed 4th January 1853. for Isaac Tallman on improvement and settlement.

M. Riddle D. S.

To J. Porter Brawley Esq^r
Sur^r. Gen^l

IN TESTIMONY that the above is a copy of the original remaining on file in the Department of Internal Affairs of Pennsylvania, made conformably to an Act of Assembly approved the 16th day of February 1833, I have hereunto set my hand and caused the Seal of said Department to be affixed at Harrisburg, this Eighth day of March 1907.

Isaac N. Dunning
Secretary of Internal Affairs.